



What Is XFlow?

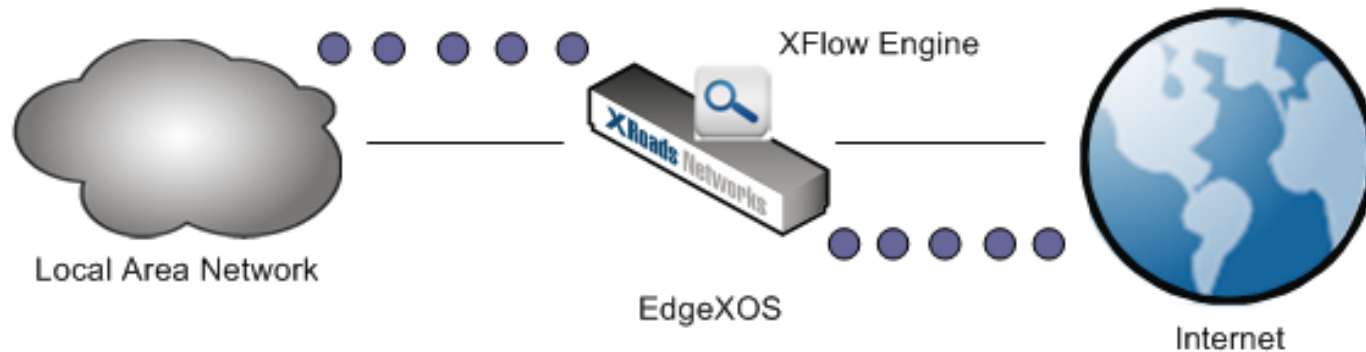
RealTime Reporting Engine

XFlow RealTime Reporting

- Captures Live Session Traffic
- Captures Live System Data
- Captures Live Usage Data
- Generates 3D Graphical Reports
- Reports “RealTime” Data
- Unique Technology from XRoads Networks

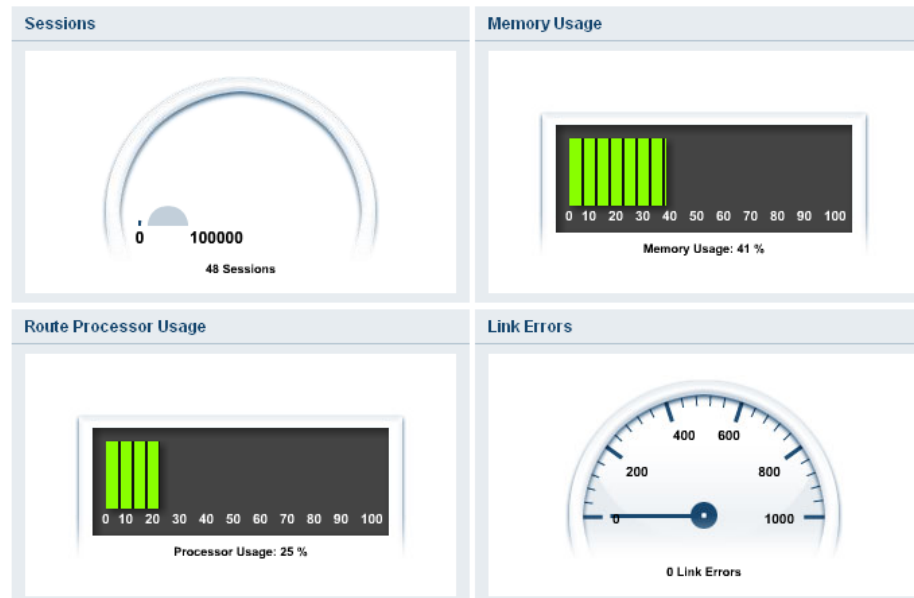
Network Usage Collection

- The EdgeXOS appliance captures data statistics in real-time and can produce detailed 3D graphical reports. Data is collected when it traverses the network interfaces, i.e. when traffic goes from the local area network to the wide area network.



System Data

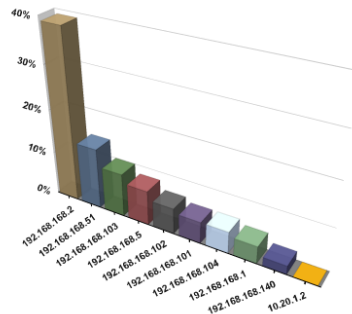
- The XFlow system monitors the EdgeXOS appliance characteristics every 5 seconds, thus providing instant utilization statistics.



Usage Reporting

Top Users/Devices
INTERNAL - Past Month

192.168.168.2 192.168.168.51 192.168.168.103 192.168.168.5
192.168.168.102 192.168.168.101 192.168.168.104 192.168.168.1
192.168.168.140 10.20.1.2



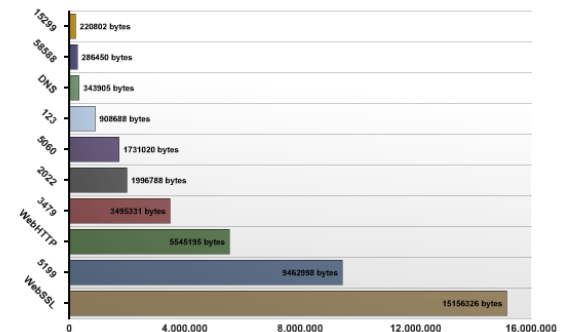
- These reports display usage information in real-time in order to provide the network administrator with information to better manage their network.

- XFlow is capable of producing a large number of reports in both tabular and 3D graphical form, which can be stored in its databases for up to a year.

Top Application Usage

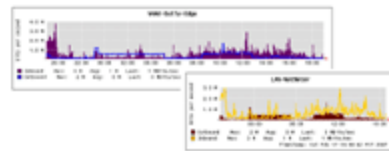
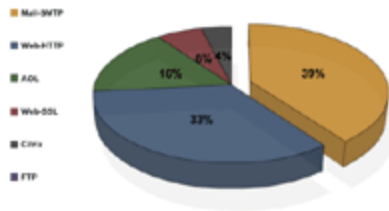
Outbound Initiated - Past Month

WebSSL 5199 WebHTTP 3479 2022 5060
123 DNS 58588 15299

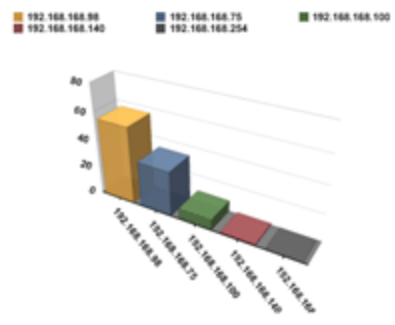
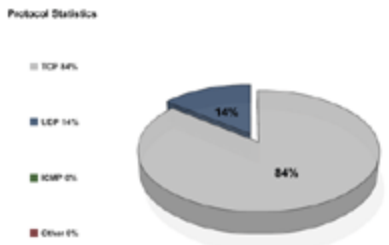
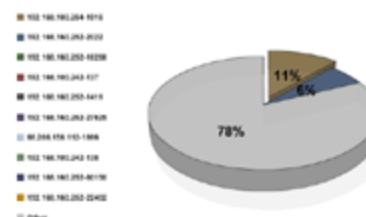


XFlow Reporting

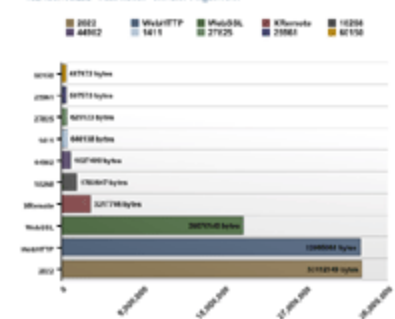
- The XFlow reporting engine is based on a highly flexible architecture which allows for continuous growth and the development of new reports. XFlow also includes full support for the open source “sflow” architecture.



Top Sessions (percentage of total traffic)
Port Range: 07:18:41 PM, 08/16/07



Bytes Per Application
192.168.168.202 - Port Range: 07:18:27 PM, 08/16/07



Host	App	MB/s	Max	Packet Loss	Jitter	Status
192.168.168.98	192.168.168.140	192.168.168.75	192.168.168.254	192.168.168.100	192.168.168.140	192.168.168.140

